



LOBOY Mount

LB-600T

LoBoY Mount and T-AMPS Adapter
Plate for satellite radio applications.



PARTS INCLUDED: LOBOY Mount, instructions, alcohol packet, surface prep packet, T-AMPS Adaptor plate, hardware.

IMPORTANT NOTICE

A Surface Preparation Cleaning Kit and Alcohol Pad have been included to clean the mounting location prior to installing the LoBoy. Failure to properly prepare the mounting surface may result in the Flex Pad failing to adhere and voiding the warranty. Do not apply to leather surfaces. Do not adjust the torque setting on the LoBoy's center screw

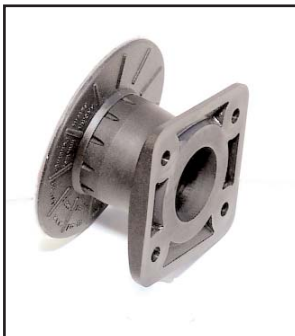
STEP 1. Temporarily attach your electronic device to the LoBoy using the manufacturer's supplied hardware or the included hardware. Select a preferred mounting location by trying different places and viewing angles. Remove the electronic device and set aside.

STEP 2. Prepare the mounting location using the Surface Preparation Cleaning Kit. To assure maximum Flex Pad adhesion, clean the mounting surface area just slightly larger than the flex pad according to the directions on the back of the Cleaning Kit. **Failure to properly prepare the mounting surface may result in the Flex Pad failing to adhere and voiding the warranty.** After cleaning with the Surface Prep Kit, clean the mounting location with the alcohol swab and allow to dry. If your application requires the T-AMPS adaptor plate, attach it at this time.

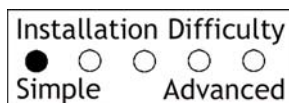
STEP 3. Peel the tape off the Flex Pad, press to the mounting location and apply firm pressure for a minimum of 30 seconds. **3M recommends that the adhesive "cure" for 72 hours before using.**

STEP 4. Attach your electronic device to the LoBoy using one of the following methods. The LoBoy may be swiveled to make the final installation easier.

Manufacturer's hardware - Insert bolts through the back of the LoBoy and into the back of the device. Tighten bolts.



Pro.Fit International, Inc.® may not be held liable for any damage to a vehicle before, during or after the installation or removal of this Pro.Fit VSM®. Pro.Fit may not be held liable for any personal injury resulting from accident or improper installation. Pro.Fit International, Inc.® 1335 Eagandale Court, Eagan, MN 55121, Ph: 651-688-3588 or 800-388-0073 Fx: 651-688-9876



© Pro.Fit International, Eagan, MN 2006-2009

VIEW INSTRUCTIONS & UPDATES
ONLINE @
WWW.PRO-FIT-INTL.COM