



## HONDA CIVIC (2001-2002)

(see reverse side for Honda Civic 2003-2004)

PART NUMBER: **HO-52-01**

**PLEASE READ COMPLETE INSTRUCTIONS BEFORE INSTALLING THIS Pro.Fit VSM®.**

All instructions assume a drivers seat vantage point. Caution is advised when removing and reassembling wood or plastic parts of a dash. Applying unnecessary force or pressure may cause a piece to crack or break.

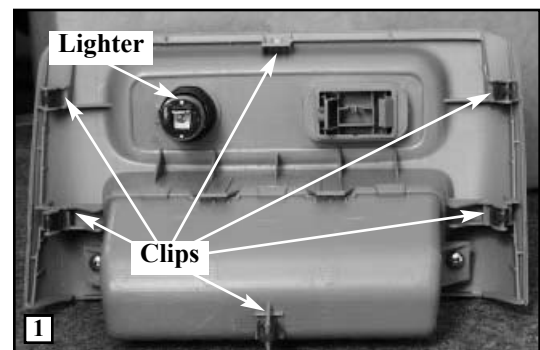
**Pro.Fit logo and part number will be right side up and readable when installed.**

**TOOLS REQUIRED:** Hook tools, 8mm nut driver, 5/64" drill bit and drill, #2 Phillips screwdriver, marking pen.

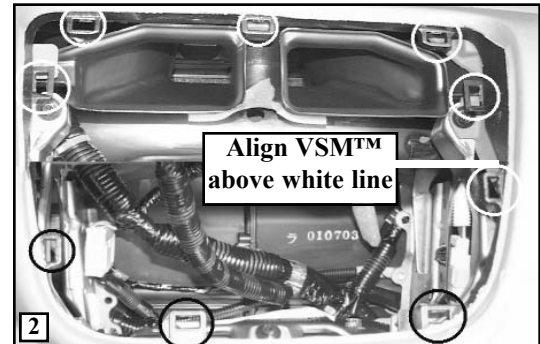
**PARTS INCLUDED:** Pro.Fit VSM®, two (2) #8 x 1/2" screws, instructions.

**LOCATION:** Right of radio.

**STEP 1.** Start by removing the cigarette lighter panel. Insert a hook tool behind the top left corner of the panel and gently pull outward to release the retainer clip. Continue working the hook tool around the panel until all six (6) clips are released. Disconnect the wire harness to the lighter and set panel aside. (See photo # 1). Inside the panel opening, at the top, are two (2) 8mm hex-head screws that hold the bottom of the radio in place. Remove the screws.



**STEP 2.** Remove the trim bezel that surrounds the radio / climate control module. Insert a hook tool behind the lower left corner of the bezel and pull firmly outward to release a retainer clip. **NOTE:** These clips hold more tightly than usual. Continue working the hook tool around the panel until all nine (9) clips are released. (See photo # 2. Clips are in the circled areas). Do not disconnect any wiring to the radio. Let the panel hangs downward.

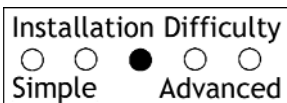


**STEP 3.** Place the bottom of the Pro.Fit VSM® directly above the middle, right retainer clip and push firmly to the right, against the dash pad. (Align the VSM® above the white line seen in photo # 2). Using the VSM® as a guide, mark the location of the two (2) screw holes. Drill two (2) pilot holes at the marked location using a 5/64" drill bit and drill. Align the VSM® over the pilot holes, insert two (2) # 8 x 1/2" screws and tighten. Reassemble the dash in reverse order.



This completes the installation of your Pro.Fit VSM®.

Pro.Fit International, Inc.® may not be held liable for any damage to a vehicle before, during or after the installation or removal of this Pro.Fit VSM®. Pro.Fit may not be held liable for any personal injury resulting from accident or improper installation. Pro.Fit International, Inc.® 1335 Eagandale Court, Eagan, MN 55121, Ph: 651-688-3588 or 800-388-0073 Fx: 651-688-9876





## HONDA CIVIC (2003-2004) (Civic SI excuded) (Vehicles purchased in the United States only) (see reverse side for Honda Civic 2001-2002)

PART NUMBER: **HO-52-01**

**PLEASE READ COMPLETE INSTRUCTIONS BEFORE INSTALLING THIS Pro.Fit VSM®.**

All instructions assume a drivers seat vantage point. Caution is advised when removing and reassembling wood or plastic parts of a dash. Applying unnecessary force or pressure may cause a piece to crack or break.

**Pro.Fit logo and part number will be right side up and readable when installed.**

**TOOLS REQUIRED:** Dash trim removal tool (DM-40-22), 8mm nut driver, 5/64" drill bit and drill, #2 Phillips screwdriver, marking pen.

**PARTS INCLUDED:** Pro.Fit VSM®, two (2) #8 x 1/2" screws, instructions.

**LOCATION:** Right of radio.

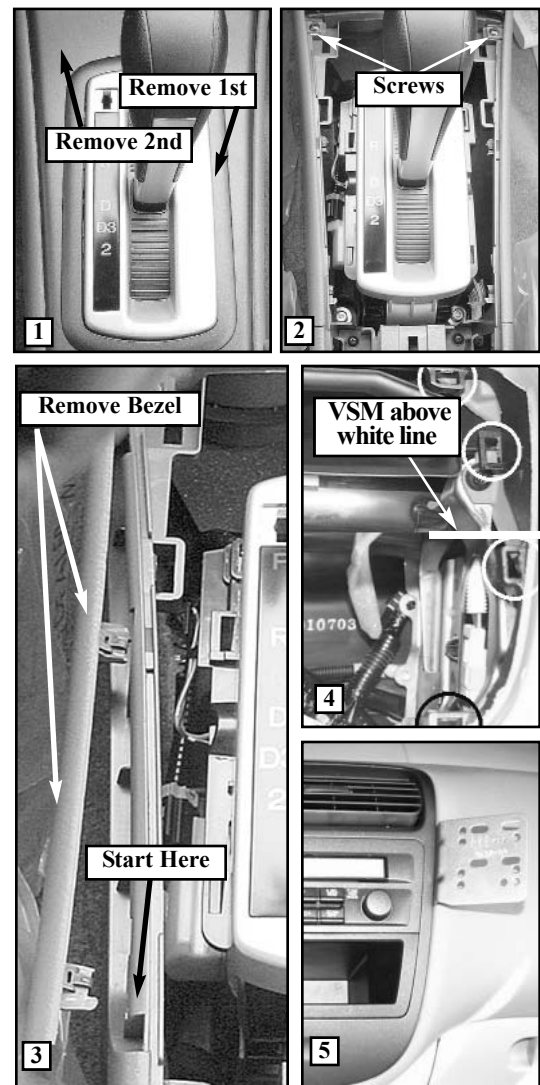
**STEP 1.** Begin by setting the parking brake and putting the gear shift into drive. See photo # 1 for the next steps. Using a dash trim removal tool, pry off the inner, gear shift bezel. (Remove 1st). Pro.Fit does not recommend the use of a hook tool for this installation in order to reduce the possibility of scratching the bezels. Next, remove the second-ring bezel. (Remove 2nd). This bezel has nine (9) retainer clips around its perimeter. Locate and remove the two (2) Phillips screws in front of the gear shift. (Photo # 2).

**STEP 2.** The cigarette lighter panel extends past the gear shift on the left and right side. (Photo # 3). Starting at the left end of the bezel, work your removal tool forward to release the first three (3) clips. Do the same on the right side. This bezel has three (3) clips on both left and right side: two before the bezel curve, and one at the curve. The cigarette lighter part of the bezel has four (4) clips: one at upper right and left and one at upper and lower middle. After all clips are released, disconnect the wiring, and set bezel aside.

**STEP 3.** Inside the panel opening, at the top, are two (2) 8mm hex-head screws that hold the bottom of the radio in place. Remove the screws. Remove the trim bezel that surrounds the radio / climate control module. Insert a removal tool behind the lower left corner of the bezel and pull firmly outward to release a retainer clip. **NOTE:** These clips hold more tightly than usual. Continue working the tool around the panel until all nine (9) clips are released. (See photo # 4. Clips are in the circled areas). Do not disconnect any wiring to the radio. Let the panel hang downward.

**STEP 4.** Place the bottom of the **Pro.Fit VSM** directly above the second-from-bottom, right retainer clip and push firmly to the right, against the dash pad. (Align the **VSM** above the white line seen in photo # 4). Using the **VSM** as a guide, mark the location of the two (2) screw holes. Drill two (2) pilot holes at the marked location using a 5/64" drill bit and drill. Align the **VSM** over the pilot holes, insert two (2) # 8 x 1/2" screws and tighten. Reassemble the dash in reverse order, remembering to reconnect all wiring..

This completes the installation of your **Pro.Fit VSM**.



Pro.Fit International, Inc.® may not be held liable for any damage to a vehicle before, during or after the installation or removal of this Pro.Fit VSM®. Pro.Fit may not be held liable for any personal injury resulting from accident or improper installation. Pro.Fit International, Inc.® 1335 Eagandale Court, Eagan, MN 55121, Ph: 651-688-3588 or 800-388-0073 Fx: 651-688-9876

