



Ford Escape (2001-2004) (w/out center console)
Mazda Tribute (2001)
 (See reverse side for 2002-2004 TRIBUTE instructions)

PART NUMBER: FO-76-01

PLEASE READ COMPLETE INSTRUCTIONS BEFORE INSTALLING THIS Pro.Fit VSM®.

All instructions assume a drivers seat vantage point. Caution is advised when removing and reassembling wood or plastic parts of a dash. Applying unnecessary force or pressure may cause a piece to crack or break.

Pro.Fit logo and part number will be right side up and readable when installed.

TOOLS REQUIRED: Hook tools, #2 Phillips screwdriver, 5/64" drill bit and drill, marking pen, masking tape.

PARTS INCLUDED: Pro.Fit VSM®, two (2) #8 x 1/2" screws, instructions.

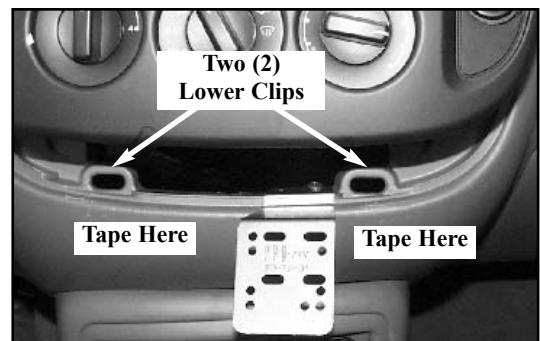
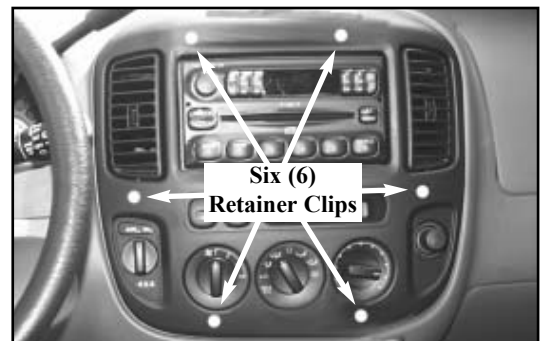
LOCATION: Below Climate Control.

CAUTION: The plastic dash pad below the climate control is extremely soft. Use special care to avoid scratching it. Cover this area with masking tape to protect it. (See photo # 2).

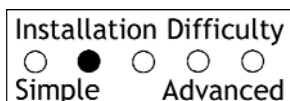
STEP 1. Remove the climate control module and trim bezel that surrounds the radio. **The climate control module and radio trim bezel are made as one piece.** Therefore, both parts will be removed as one. Insert a hook tool behind the upper, right corner of the bezel and gently pull out to release a retainer clip. (See photo # 1). Work the hook tool clockwise around the bezel, releasing the remaining five (5) clips. Pull the bezel forward and up enough to expose the two (2) lower clips. (See photo # 2). It is **not necessary** to disconnect any wiring attached to the bezel.

STEP 2. Place the Pro.Fit VSM® on the lower dash pad against the lower right clip. (See photo # 2). Using the VSM® as a guide, mark the location of the two (2) mounting holes. Set the VSM® aside. Using a 5/64" drill bit and drill, drill two (2) pilot holes at the marked locations. **Caution: To avoid drilling through the dash, do not drill the pilot holes more than 1/4" deep.** Position the VSM® over the pilot holes, insert two (2) # 8 x 1/2" screws and tighten. Reassemble the dash in reverse order.

This completes the installation of your Pro.Fit VSM®.



Pro.Fit International, Inc.® may not be held liable for any damage to a vehicle before, during or after the installation or removal of this Pro.Fit VSM®. Pro.Fit may not be held liable for any personal injury resulting from accident or improper installation. Pro.Fit International, Inc.® 1335 Eagandale Court, Eagan, MN 55121, Ph: 651-688-3588 or 800-388-0073 Fx: 651-688-9876



© Pro.Fit International, Eagan, MN 2004





MAZDA TRIBUTE (2002-2004)

(See reverse side for 2001 TRIBUTE & FORD ESCAPE (2001-2004 instructions))

PART NUMBER: FO-76-01

PLEASE READ COMPLETE INSTRUCTIONS BEFORE INSTALLING THIS Pro.Fit VSM®.

All instructions assume a drivers seat vantage point. Caution is advised when removing and reassembling wood or plastic parts of a dash. Applying unnecessary force or pressure may cause a piece to crack or break.

Pro.Fit logo and part number will be right side up and readable when installed.

TOOLS REQUIRED: Hook tools, #2 Phillips screwdriver, 5/64" drill bit and drill, marking pen, masking tape, 7mm nut driver.

PARTS INCLUDED: Pro.Fit VSM®, two (2) #8 x 1/2" screws, instructions.

LOCATION: Below Climate Control.

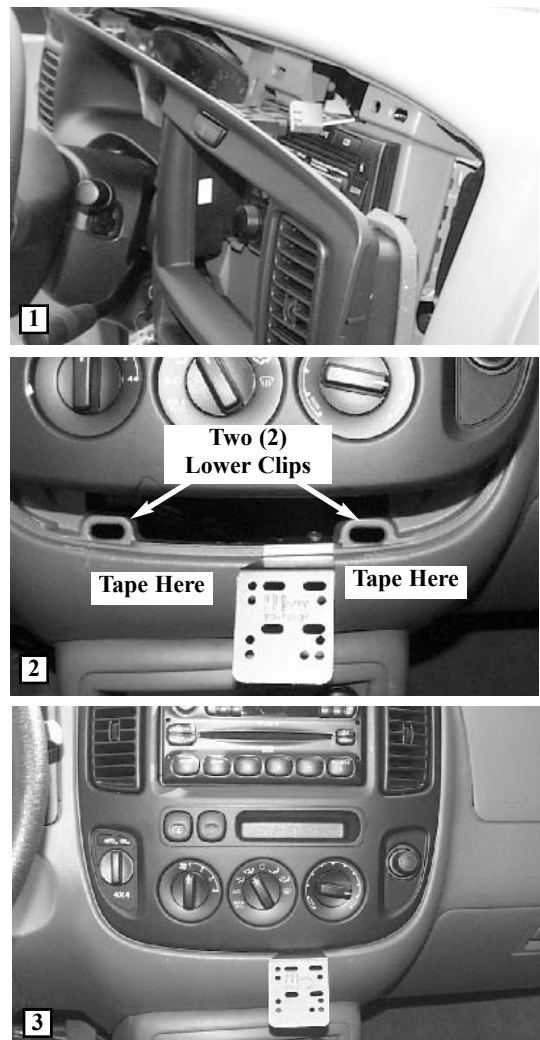
CAUTION: The plastic dash pad below the climate control is extremely soft. Use special care to avoid scratching it. Cover this area with masking tape to protect it. (See photo # 2).

STEP 1. Begin by locating the two (2) 7mm bolts in the dash bezel above the instrument (tach and speedometer) module. Remove the bolts.

STEP 2. Remove the climate control module and trim bezel that surrounds the instrument module and the radio. **The climate control module and air vents are built into this bezel.** Therefore, both will pull-out with the bezel. Insert a hook tool behind the upper, right corner of the bezel and gently pull out to release a retainer clip. Work the hook tool clockwise around the bezel, releasing all the remaining clips. Pull the bezel forward and up enough to expose the two (2) lower clips. (See photo # 2). It is **not necessary** to disconnect any wiring attached to the bezel.

STEP 3. Place the **Pro.Fit VSM®** on the lower dash pad against the lower right clip. (See photo # 2). Using the **VSM®** as a guide, mark the location of the two (2) mounting holes. Set the **VSM®** aside. Using a 5/64" drill bit and drill, drill two (2) pilot holes at the marked locations. **Caution: To avoid drilling through the dash, do not drill the pilot holes more than 1/4" deep.** Position the **VSM®** over the pilot holes, insert two (2) # 8 x 1/2" screws and tighten. Reassemble the dash in reverse order.

This completes the installation of your **Pro.Fit VSM®**.



Pro.Fit International, Inc.® may not be held liable for any damage to a vehicle before, during or after the installation or removal of this Pro.Fit VSM®. Pro.Fit may not be held liable for any personal injury resulting from accident or improper installation. Pro.Fit International, Inc.® 1335 Eagandale Court, Eagan, MN 55121, Ph: 651-688-3588 or 800-388-0073 Fx: 651-688-9876

