



CHRYSLER SEBRING COUPE (2001-2004)
DODGE STRATUS COUPE (2001-2006)
MITSUBISHI ECLIPSE (2000-2005)

PART NUMBER: **DG-55-01**

PLEASE READ COMPLETE INSTRUCTIONS BEFORE INSTALLING THIS Pro.Fit VSM®.

All instructions assume a drivers seat vantage point. Caution is advised when removing and reassembling wood or plastic parts of a dash. Applying unnecessary force or pressure may cause a piece to crack or break.

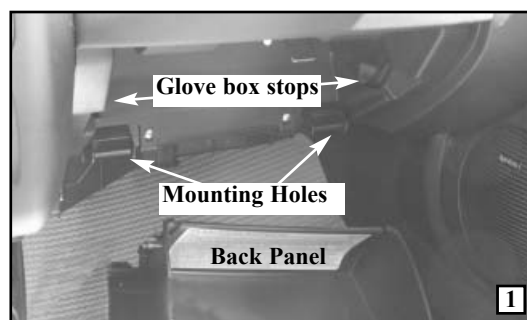
Pro.Fit logo and part number will be right side up and readable when installed.

TOOLS REQUIRED: #2 Phillips screwdriver, 5/64" drill bit and drill, marking pen.

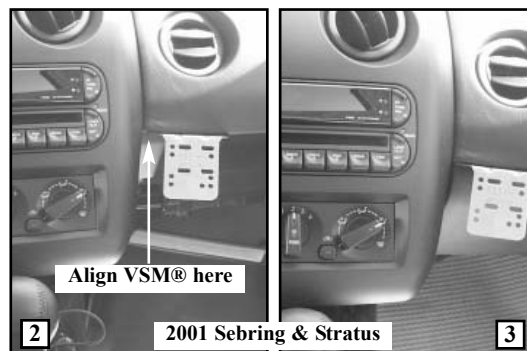
PARTS INCLUDED: Pro.Fit VSM®, three (3) #8 x 1/2" screws, instructions.

LOCATION: Right of Radio.

STEP 1. Begin by removing the glove compartment. Open the glove compartment door and grab hold of the left and right side of the glove box. Squeeze the two sides inward until they clear the glove compartment stops. (See photo # 1). Continue opening the glove compartment until the back panel of the box clears the dash opening. Lift the glove box out of the mounting holes. (See photo # 1). Set the glove box aside.



STEP 2. Place the Pro.Fit VSM® on the dash pad above the glove box cavity. Align the left edge of the VSM® against the right side of the radio. (See photo # 2). Adjust the VSM® against the dash until the contours of the VSM® fit tightly against the dash pad. Using the VSM® as a guide, mark the location of the three (3) mounting holes. Set the VSM® aside. Using a 5/64" drill bit and drill, drill two (2) pilot holes, approximately 1/2" deep at the marked locations. Position the VSM® over the pilot holes, insert three (3) # 8 x 1/2" screws and tighten. Reassemble the dash in reverse order.

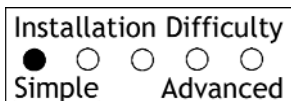


NOTE: Photo #3 shows the finished installation for the 2001 Sebring & Stratus, while photo #4 shows the 2001 Eclipse. While the radio & climate control modules vary in design, the installation procedure for these cars is identical.

This completes the installation of your Pro.Fit VSM®.



Pro.Fit International, Inc.® may not be held liable for any damage to a vehicle before, during or after the installation or removal of this Pro.Fit VSM®. Pro.Fit may not be held liable for any personal injury resulting from accident or improper installation. Pro.Fit International, Inc.® 1335 Eagandale Court, Eagan, MN 55121, Ph: 651-688-3588 or 800-388-0073 Fx: 651-688-9876



© Pro.Fit International, Eagan, MN 2006

**VIEW INSTRUCTIONS & UPDATES
 ONLINE @
 WWW.PRO-FIT-INTL.COM**